

46. VPN Backup

Scenario:

VPN Router 1

LAN:192.168.1.1/255.255.255.0

WAN1:192.168.10.11/255.255.255.0 GW 192.168.10.1

WAN2:192.168.20.11/255.255.255.0 GW 192.168.20.1

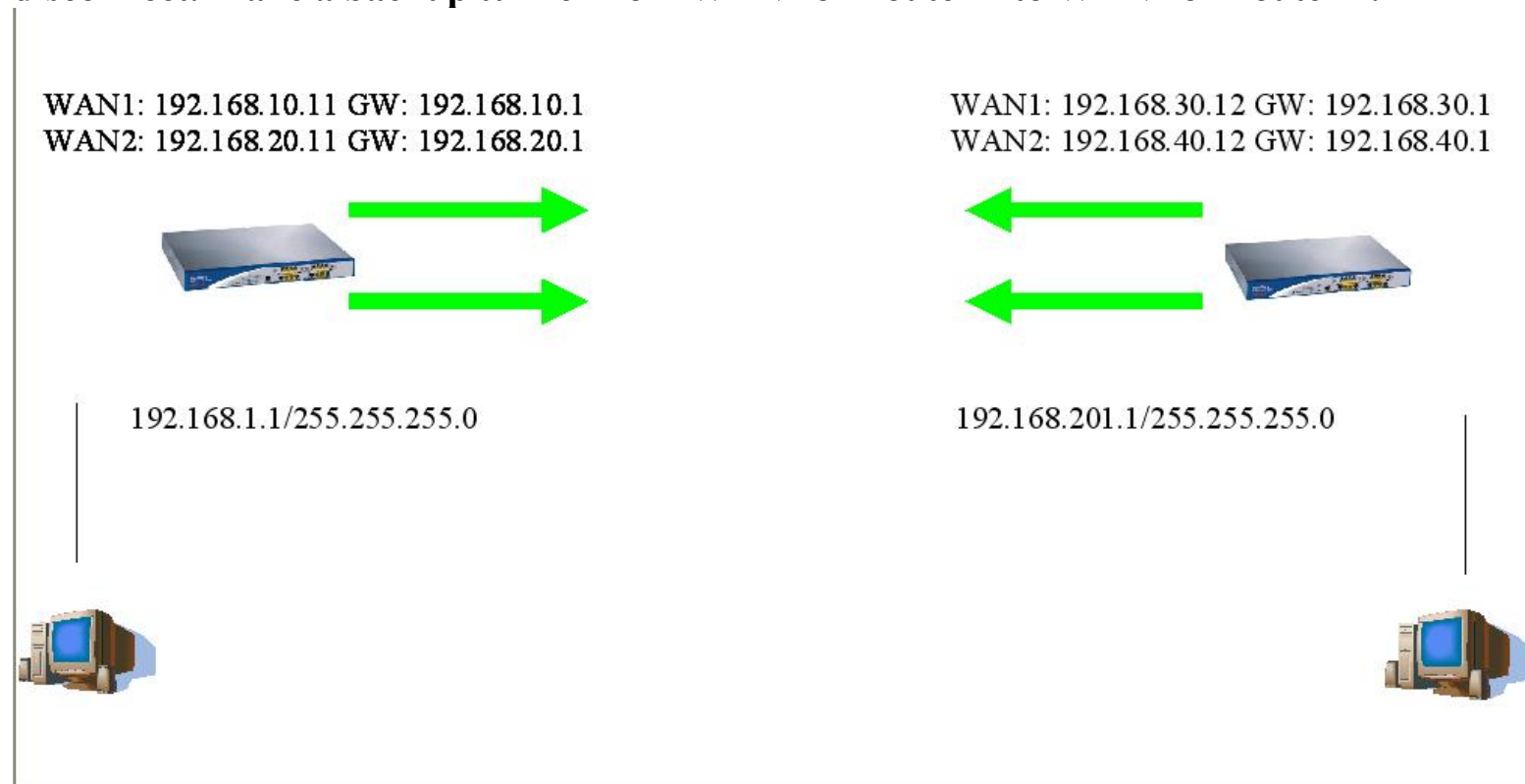
VPN Router 2

LAN:192.168.201.1/255.255.255.0

WAN1:192.168.30.12/255.255.255.0 GW 192.168.30.1

WAN2:192.168.40.12/255.255.255.0 GW 192.168.40.1

Make a ipsec tunnel from WAN1 of Router 1 to WAN1 of Router 2. When this tunnel disconnect. Make a backup tunnel from WAN2 of Router 1 to WAN2 of Router 2.



- Step 1:
Set a GRE over IPsec tunnel from WAN1 of VPN Router 1 to WAN1 of VPN Router 2.
- 1.1
Config a GRE over IPsec tunnel in VPN Router 1 for WAN1

DrayTek Y3300 Advanced Router :: Administration - Mozilla Firefox

檔案(F) 編輯(E) 檢視(V) 瀏覽(G) 書籤(B) Yahoo! 工具(T) 說明(H)

http://192.168.1.1/cgi-bin/mainfunction.cgi?set=sys_status&sys_status_tag=1

Vigor3300 series
MultiService Security

VIGOROUS BROADBAND ACCESS

Quick Setup System Network Advanced Firewall QoS **VPN** 10:16:27

IPsec Policy Table
PPTP & L2TP VPN Trunk Policy Table
Log Group Table
Trust CA
User Certificate
Status

System - Status

Refresh Option: No Refresh Refresh

Basic Status	LAN Status	WAN Status
Model :	Vigor3300V	
Hardware Version :	1.0	
Firmware Version :	2.5.8 RC1 (EN)	
Build Date&Time :	2007-10-19 17:20:18	
System Uptime :	0 days 0 hours 0 minutes 7 seconds	
CPU Usage :	94.2181%	
Memory Size :	64 MBytes	
Memory Usage :	19.7965%	
Current System Time :	2007-10-19 17:08:59	

DrayTek Corp. © 1997 - 2007 All rights reserved. DrayTek Enterprise Network Solutions.

完成

VPN - IPSec - VPN Trunk - Policy Table

#	Connection Name	Local GRE IP	Remote Gateway	Remote GRE IP	Interface	Profile Status	Operational Status
1						<input checked="" type="radio"/>	
2						<input type="radio"/>	
3						<input type="radio"/>	
4						<input type="radio"/>	
5						<input type="radio"/>	
6						<input type="radio"/>	
7						<input type="radio"/>	
8						<input type="radio"/>	
9						<input type="radio"/>	
10						<input type="radio"/>	

Refresh Edit Delete Delete All

VPN - IPSec - VPN Trunk - Policy Table

Default Advanced

Basic

Profile Status:

Name:

Authentication:

Preshared Key:

Security Protocol:

NAT Traversal:

Local Gateway

WAN Interface:

Local Certificate:

Security Gateway:

Local GRE IP:

Next hop:

Remote Gateway

Remote ID:

Security Gateway: (0.0.0.0* for dynamic client)

Remote GRE IP:

Apply Cancel

1.2

Config a GRE over IPSec tunnel in VPN Router 2 for WAN1

VPN - IPSec - VPN Trunk - Policy Table

Default	Advanced
Basic	
Profile Status :	Enable ▾
Name :	vpn_trunk1
Authentication :	Preshared Key ▾
Preshared Key :	***
Security Protocol :	AH ▾
NAT Traversal :	Enable ▾
Local Gateway	
WAN Interface :	WAN1 ▾
Local Certificate :	▾
Security Gateway :	default
Local GRE IP :	192.168.100.12
Next hop :	default
Remote Gateway	
Remote ID :	
Security Gateway :	192.168.10.11 (*0.0.0.0' for dynamic client)
Remote GRE IP :	192.168.100.11

Apply **Cancel**

- Step 2:
Set a GRE over IPSec tunnel from WAN2 of VPN Router 1 to WAN2 of VPN Router 2.
- 2.1
Config a GRE over IPSec tunnel in VPN Router 1 for WAN2

DrayTek Y3300 Advanced Router :: Administration - Mozilla Firefox

檔案(F) 編輯(E) 檢視(V) 瀏覽(G) 書籤(B) Yahoo! 工具(T) 說明(H)

http://192.168.1.1/cgi-bin/mainfunction.cgi

VPN - IPSec - VPN Trunk - Policy Table

Default | Advanced

Basic

Profile Status :

Name :

Authentication :

Preshared Key :

Security Protocol :

NAT Traversal :

Local Gateway

WAN Interface :

Local Certificate :

Security Gateway :

Local GRE IP :

Next hop :

Remote Gateway

Remote ID :

Security Gateway : (*0.0.0.0' for dynamic client)

Remote GRE IP :

完成

Config a GRE over IPSec tunnel in VPN Router 2 for WAN2

VPN - IPSec - VPN Trunk - Policy Table

Default	Advanced
Basic	
Profile Status :	Enable <input type="button" value="v"/>
Name :	<input type="text" value="vpn_trunk2"/>
Authentication :	Preshared Key <input type="button" value="v"/>
Preshared Key :	<input type="text" value="***"/>
Security Protocol :	AH <input type="button" value="v"/>
NAT Traversal :	Enable <input type="button" value="v"/>
Local Gateway	
WAN Interface :	WAN2 <input type="button" value="v"/>
Local Certificate :	<input type="button" value="v"/>
Security Gateway :	<input type="text" value="default"/>
Local GRE IP :	<input type="text" value="192.168.101.12"/>
Next hop :	<input type="text" value="default"/>
Remote Gateway	
Remote ID :	<input type="text"/>
Security Gateway :	<input type="text" value="192.168.20.11"/> ('0.0.0.0' for dynamic client)
Remote GRE IP :	<input type="text" value="192.168.101.11"/>

Step3:

Set a VPN Trunk Group include tunnel 1 as master and tunnel 2 as backup salve in VPN Router 1.

The screenshot shows the DrayTek V3300 Advanced Router administration interface in Mozilla Firefox. The browser address bar shows the URL: `http://192.168.1.1/cgi-bin/mainfunction.cgi?set=vpn_trunk_table_view&table_name=vpn_trunk_ply&table_page=1`. The interface title is "Vigor3300 series MultiService Security" with the tagline "VIGOROUS BROADBAND ACCESS". The navigation menu includes: Quick Setup, System, Network, Advanced, Firewall, QoS, and VPN (selected). The time displayed is 11:52:02.

The main content area is titled "VPN - IPSec - VPN Trunk - Policy Table". It features a table with the following data:

#	Connection Name	Local GRE IP	Remote Gateway	Remote GRE IP	Remote GRE Interface	file Status	Operational Status
1	vpn_trunk1	192.168.100.11	192.168.30.12	192.168.100.1		enable	up
2	vpn_trunk2	192.168.101.11	192.168.40.12	192.168.101.12	WAN2	enable	up
3							
4							
5							
6							
7							
8							
9							
10							

At the bottom right of the table area, there are buttons for "Refresh", "Edit", "Delete", and "Delete All".

The footer of the interface reads: "DrayTek Corp. © 1997 - 2007 All rights reserved. DrayTek Enterprise Network Solutions."

The Windows taskbar at the bottom shows the system tray with the time "上午 11:52" and various icons.

VPN - VPN Trunk - Group Table

#	Profile Status	Name	Local Subnet	Remote Subnet
1	<input checked="" type="radio"/>			
2	<input type="radio"/>			
3	<input type="radio"/>			
4	<input type="radio"/>			
5	<input type="radio"/>			
6	<input type="radio"/>			
7	<input type="radio"/>			
8	<input type="radio"/>			
9	<input type="radio"/>			
10	<input type="radio"/>			

1

[Edit](#) [Delete](#) [Delete All](#)

VPN - VPN Trunk - Group Table - Edit

1

Profile Status : Disable Enable

Name :

Local Subnet : /

Remote Subnet : /

Tunnel 1 : Weight :

Tunnel 2 : Weight :

Tunnel 3 : Weight :

Tunnel 4 : Weight :

Backup

Active	Master	Slave
<input checked="" type="checkbox"/>	<input type="text" value="vpn_trunk1"/>	<input type="text" value="vpn_trunk2"/>
<input type="checkbox"/>	<input type="text" value=""/>	<input type="text" value=""/>

Apply Cancel

Step4:
Set a VPN Trunk Group include tunnel 1 as master and tunnel 2 as backup salve in VPN Router 2.

The screenshot shows the administration interface of a DrayTek V3300 Advanced Router. The browser window title is "DrayTek V3300 Advanced Router :: Administration - Mozilla Firefox". The address bar shows "http://192.168.201.1/cgi-bin/mainfunction.cgi". The page header includes "Vigor3300 series MultiService Security" and "VIGOROUS BROADBAND ACCESS". The navigation menu includes "Quick Setup", "System", "Network", "Advanced", "Firewall", "QoS", and "VPN". The current page is "VPN - VPN Trunk - Group Table - Edit".

The configuration for Group 1 is as follows:

- Profile Status: Disable Enable
- Name: group1
- Local Subnet: 192.168.201.0 / 24
- Remote Subnet: 192.168.1.0 / 24
- Tunnel 1: vpn_trunk1 Weight: 1
- Tunnel 2: [Empty] Weight: [Empty]
- Tunnel 3: [Empty] Weight: [Empty]
- Tunnel 4: [Empty] Weight: [Empty]

The Backup configuration table is:

Active	Master	Slave
<input checked="" type="checkbox"/>	vpn_trunk1	vpn_trunk2
<input type="checkbox"/>	[Empty]	[Empty]

Buttons: Apply, Cancel

Footer: DrayTek Corp. © 1997 - 2007 All rights reserved, DrayTek Enterprise Network Solutions.

Windows taskbar: 完成, 開始, 下午 07:17