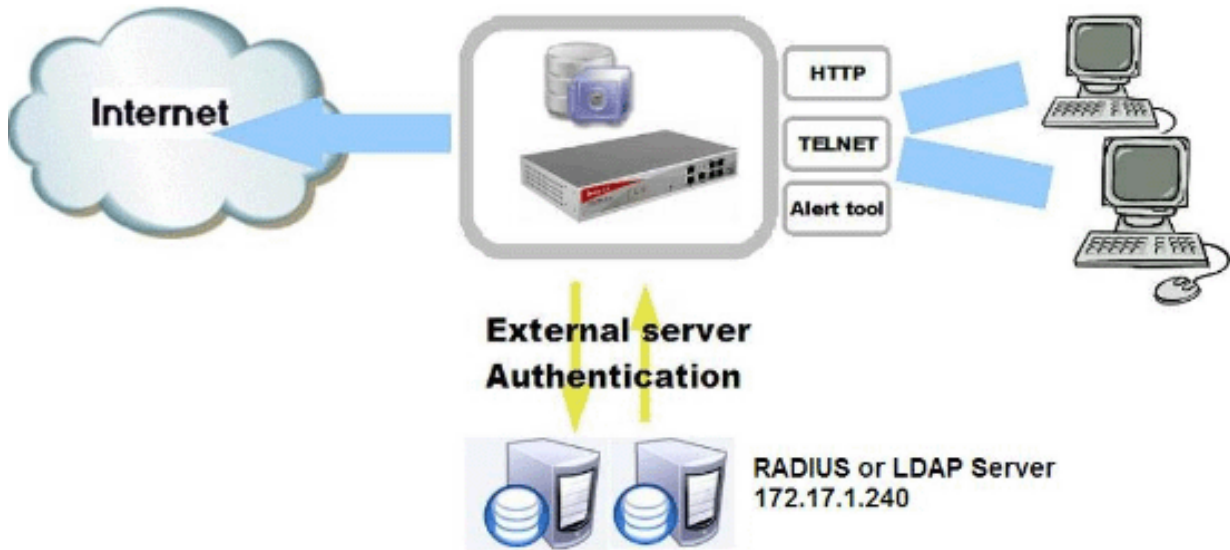


# How to verify the user identity via external server authentication (RADIUS or LDAP)

The User Management function supports External Server Authentication via LDAP or RADIUS server. The scenario is similar as the following figure. The External Server can be connected behind the router or located on the Internet.



For each user using external server authentication, you have to create a **user profile** with appropriate user name.

User Management >> User Profile

---

**Profile Index 33**

<input checked="" type="checkbox"/> Enable this account	User Online Status : Block
User Name	<input type="text" value="Tom"/>
Password	<input type="password"/>
Confirm Password	<input type="password"/>
Idle Timeout	<input type="text" value="10"/> min(s) 0:Unlimited
Max User Login	<input type="text" value="0"/> 0:Unlimited
<b>External Server Authentication</b>	<input type="text" value="Radius"/>
Log	<input type="text" value="None"/>
Pop Browser Tracking Window	<input checked="" type="checkbox"/>
Authentication	<input checked="" type="checkbox"/> Web <input checked="" type="checkbox"/> Alert Tool <input checked="" type="checkbox"/> Telnet
<input type="checkbox"/> Enable Time Quota	<input type="text" value="3"/> min(s) <input type="button" value="Refresh"/> , <input type="button" value="Add"/> more <input type="text" value="3"/> min(s)
Index(1-15) in <u>Schedule</u> Setup:	<input type="text"/> , <input type="text"/> , <input type="text"/> , <input type="text"/>

Please note the **User Name** setting in a user profile must be the same as used in the external server. The **Password** field must keep empty. When the router receives an authentication request from a client, it searches all the user profiles according to the User Name setup. If a match is found, it will check the **External Server Authentication** setup, if it is Radius or LDAP, the authentication request is forwarded to the server defined in the **Applications >> RADIUS / LDAP**.

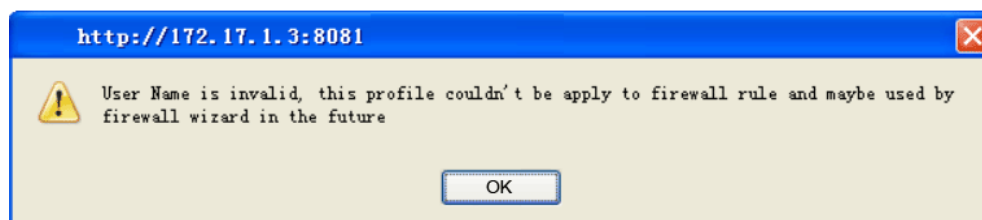
Applications >> RADIUS / LDAP

#### RADIUS / LDAP Setup

<b>RADIUS Setup</b>	
<input checked="" type="checkbox"/> Enable	
Server IP Address	172.17.1.240
Destination Port	1812
Shared Secret	●●●
Confirm Shared Secret	●●●
<b>LDAP Setup</b>	
<input type="checkbox"/> Enable	
Server IP Address	
Destination Port	389
Common Name Identifier	
Distinguished Name	

The username and password are checked on the Radius/LDAP server. If authentication is successful, the Radius/LDAP server replies “auth success” to the router, then the user is allowed to access the Internet. If the authentication is failed, “auth failure” is replied to the router and the user is not allowed to access the Internet.

- If you don't type a User Name, you will get the following error message.



- If you enter a password when Radius or LDAP is enabled, you will get the following message.

